

EBU Scientific Forum - Call for contributions -

It is a great pleasure for us to call for **your contribution to the first EBU Scientific Forum**, taking place on **22nd and 23rd September 2021** as interactive online event.

The EBU Scientific Forum provides a platform for presenting **EBU research**, fostering **networking** and **intensifying collaborations** between scientists from the EBU alliance and selected partners of the EBU network.

We call for contributions for:

- a) **Presentations and posters** on thematic areas from **bioeconomy research**.
- b) **Pitch sessions** for presenting research topics and ideas **to facilitate research cooperation**.

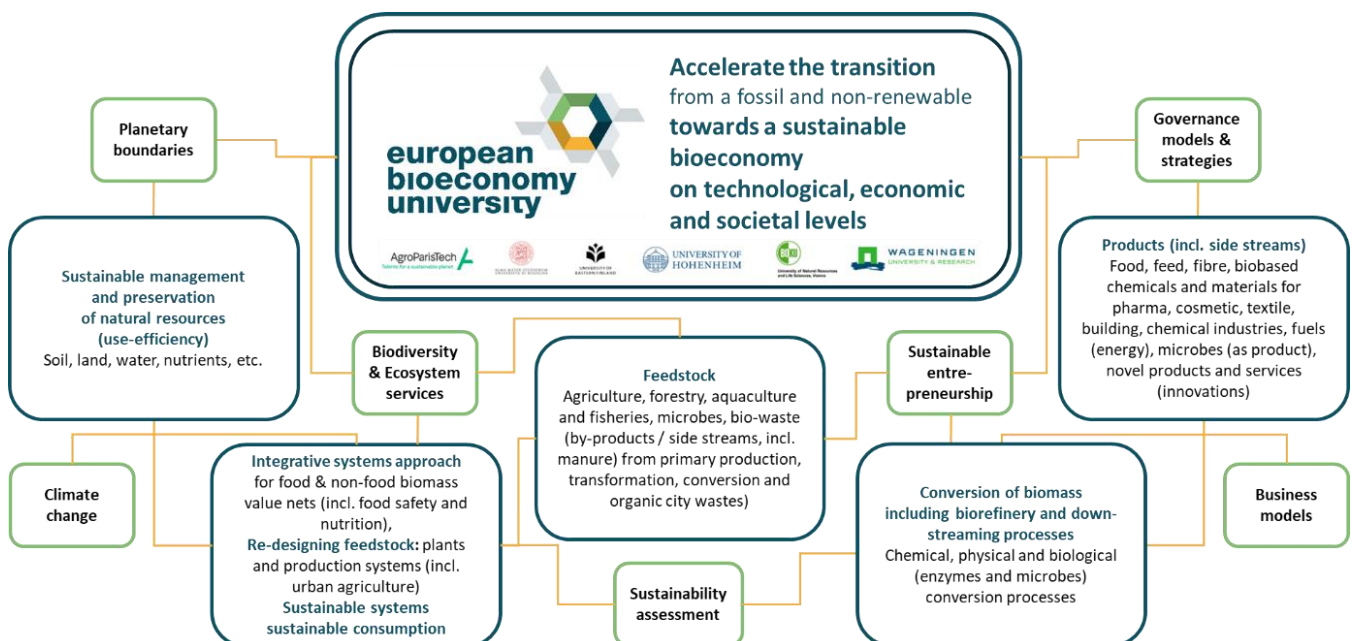
a) Bioeconomy research and education: 5 parallel sessions

Addressees: All researchers from EBU Alliance and associated partners

Formats:

- **Oral presentation:** 10 minutes presentation followed 8 minutes discussion
- **Poster** including mini-oral presentation of 3 minutes

The selection of abstracts for oral presentation and posters will be done by EBU experts.



Overview of thematic areas covered in the parallel sessions of the EBU Scientific Forum

Thematic areas covered

1. Sustainable biobased resources and ecosystem services for the bioeconomy

This thematic area includes agriculture, forestry, aquaculture, fisheries, algae as well as residues and organic wastes. Further, the relationships between biomass production systems and climate change, the planetary boundaries, biodiversity and ecosystem services are covered, for a sustainable management and preservation of natural resources.

2. From biomass to biobased products

Biorefineries and related down-stream processes are an integral part of the bioeconomy. In this thematic area, the focus is on chemical, physical and biological conversion processes of biobased resources for the production of food, feed, biomaterials, bioenergy, biochemicals, pharmaceuticals and related products.

3. Bioeconomy-related business models and sustainable entrepreneurship

Under this thematic area we expect to hear about innovative business models and sustainable entrepreneurship putting biobased value chains into practice.

4. The integrative systems approach for the innovative bioeconomy

The societal transition towards the bioeconomy emerges from novel governance models, policy strategies, innovation systems and the development of new biobased value chains and rigorous sustainability assessments. Additionally, the area emphasis on evolving biobased markets, the retailer perspective and potential ways to support sustainable consumer behaviour.

5. Educate system changers: novel educational concepts and required skills profiles

Contributions are expected to cover innovative educational concepts, methods and approaches as well as educational demands by the private and public sector leading to adapted skills profiles. Insights into experiences from ongoing bioeconomy education are welcome.

Format of your abstract

Please formulate clearly and concisely:

- Relevance and the aim of the study,
- Materials and methodologies used,
- Major results and findings,
- Conclusion of your research.

The abstract should be structured in these sections:

- Informative and concise title
- Name(s) of the author(s) and their affiliations (under the title, not part of the abstract body).
- Maximum length: 2500 characters including spaces (excl. title, author and affiliations).
- A maximum of two references are allowed per abstract.
- The abstracts must be fully self-contained and understandable without further references.
- Avoid using non-standard abbreviations.

Submission

- **Please submit** your abstracts to until: **13th June 2021**.
- Submission will be open from the 7th May : [EBU Scientific Forum - Smart Abstract Submission \(smart-abstract.com\)](https://www.ebu-science.org/abstract-submission)
- You will receive the **notification** of acceptance by **Mid-July 2021**.



b) Research pitches: 5 parallel sessions

Addressees: All researchers from EBU Alliance and associated partners

Format:

- **Short pitches** including slides of max. 3min

Content and pitch structure:

- i. Own field of research,
- ii. Interdisciplinary cooperation needs,
- iii. Potential ideas for joint research projects.

Thematic areas covered

The sessions are organised according to the same thematic areas described above – see a).

We are especially looking for interdisciplinary cooperation approaches and cross-cutting areas with thematic fits to selected EU calls.

Submission

- **Please submit** your abstract of the pitch (see a) for format) until: **13th June 2021**.
- Submission will be open from the 7th May : [EBU Scientific Forum - Smart Abstract Submission \(smart-abstract.com\)](https://smart-abstract.com)
- You will receive the **notification** of acceptance until **Mid-July 2021**.



Further information and contact

<https://european-bioeconomy-university.eu> | ebu@ua.uni-hohenheim.de